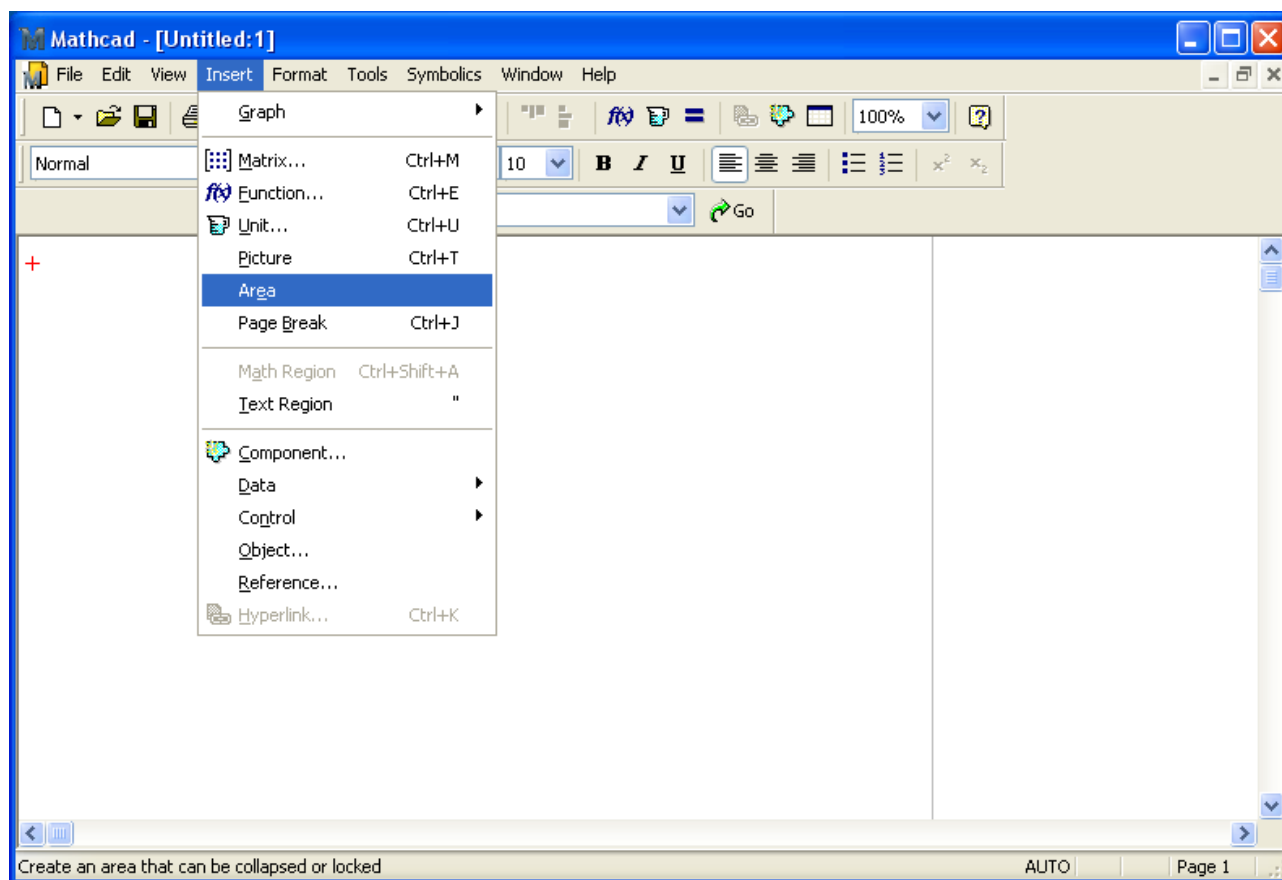
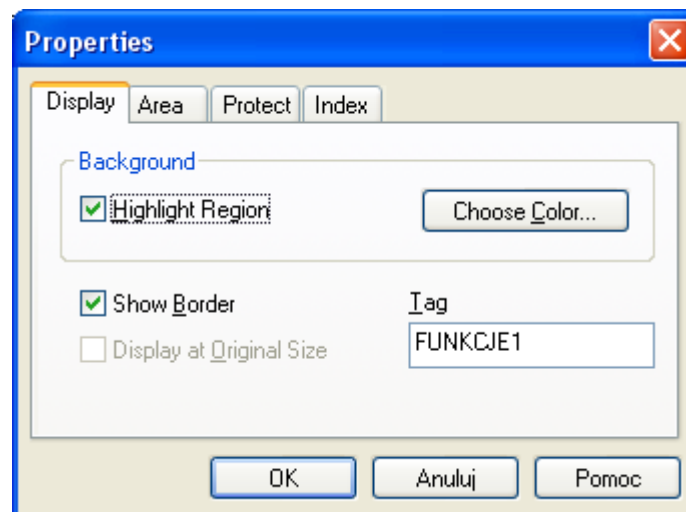
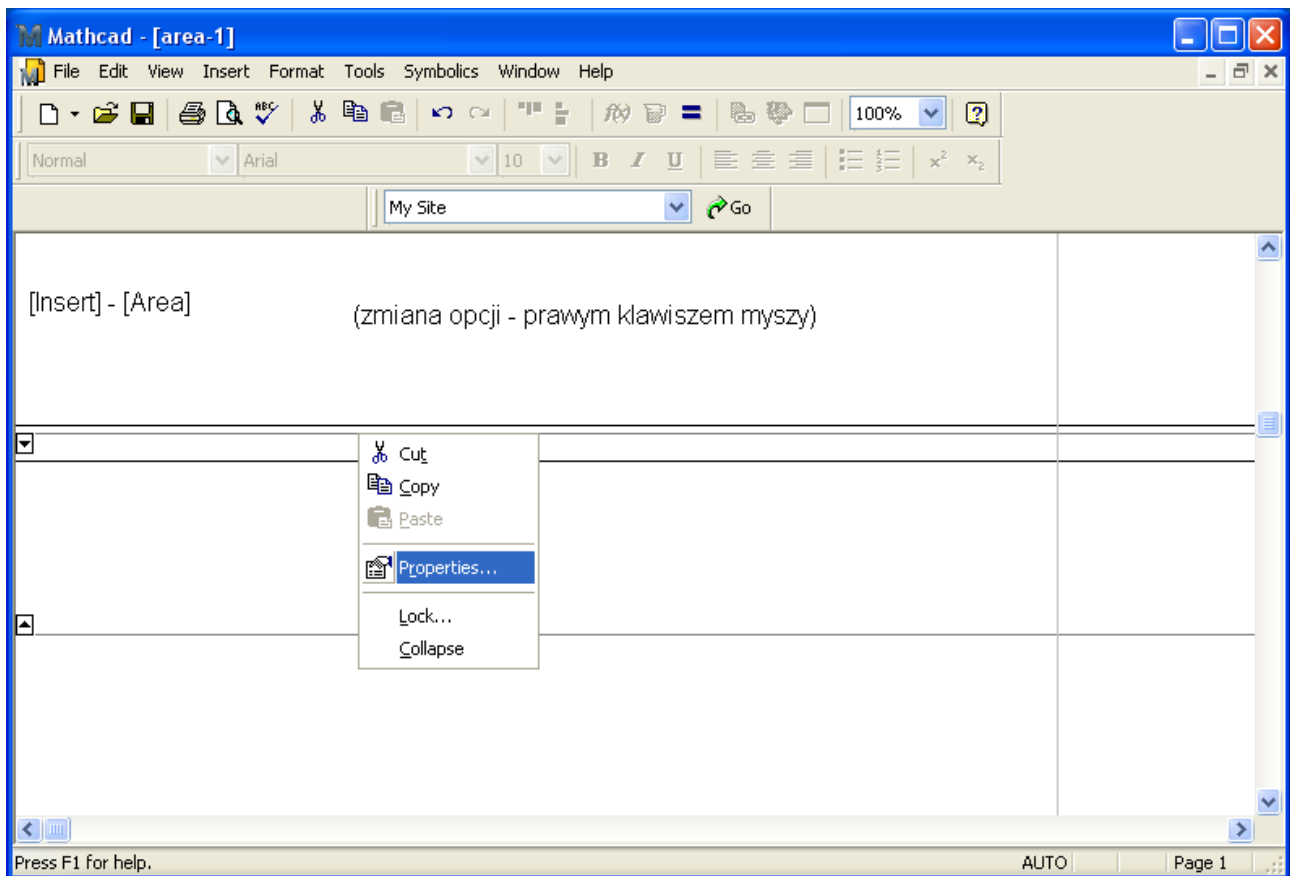


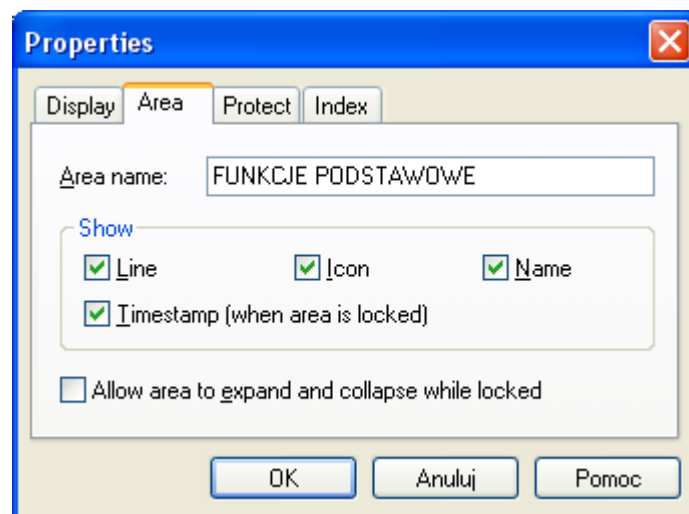
AREA (obszar)



Klikamy prawym klawiszem myszy w granicę obszaru.



Zaznaczamy **Highlight Region** i klikamy w **Choose Color**

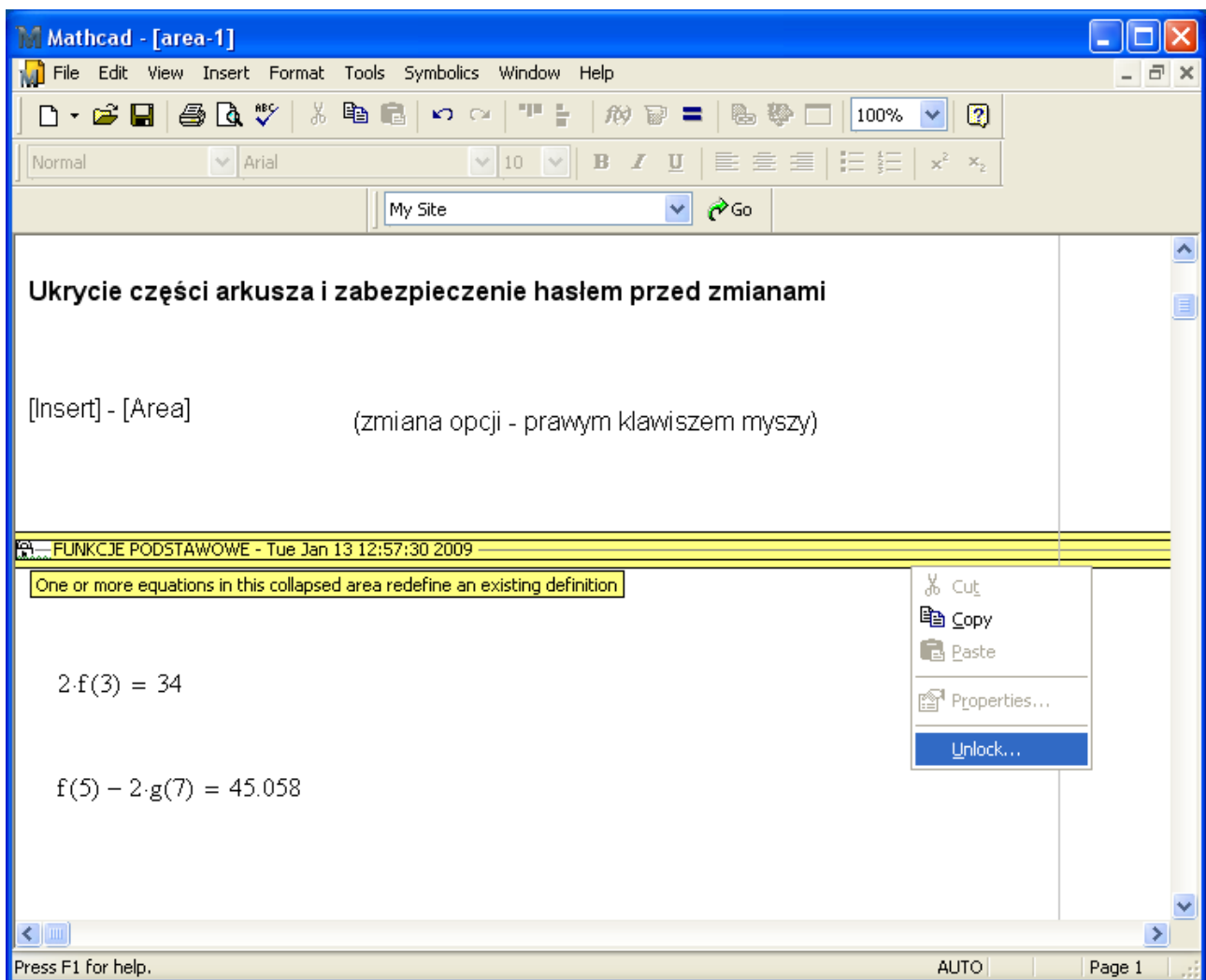
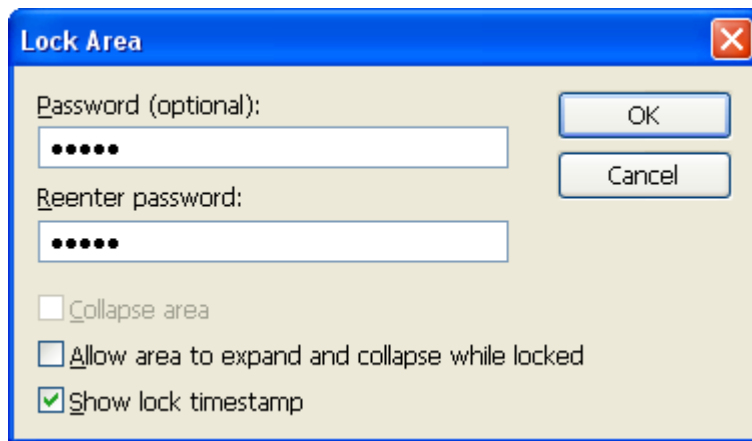


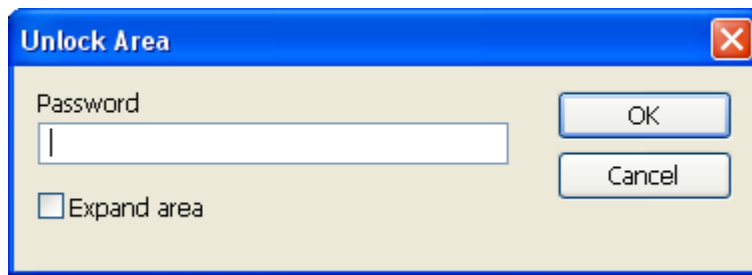
Line – ogranicza obszar od góry i dołu liniami (granice obszaru rysowane są także po wybraniu opcji **Show Border**)

Icon – umieszcza ikonę po lewej stronie granic obszarów

Allow area to expand and collapse while locked – można obejrzeć obszar lecz nie można edytować jego zawartości

Zabezpieczanie wybranego obszaru hasłem





Mathcad - [area-1]

File Edit View Insert Format Tools Symbolics Window Help

Normal Arial 10 B I U

My Site Go

Ukrycie części arkusza i zabezpieczenie hasłem przed zmianami

[Insert] - [Area] (zmiana opcji - prawym klawiszem myszy)

▼ FUNKCJE PODSTAWOWE

$$f(x) := 2 \cdot x^2 - 1$$
$$g(x) := 3 \cdot \sin(x)$$

▲ FUNKCJE PODSTAWOWE

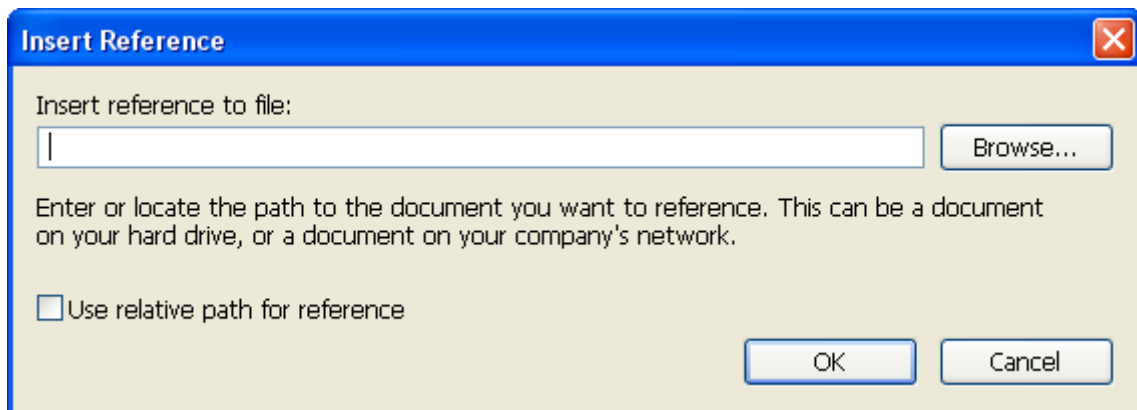
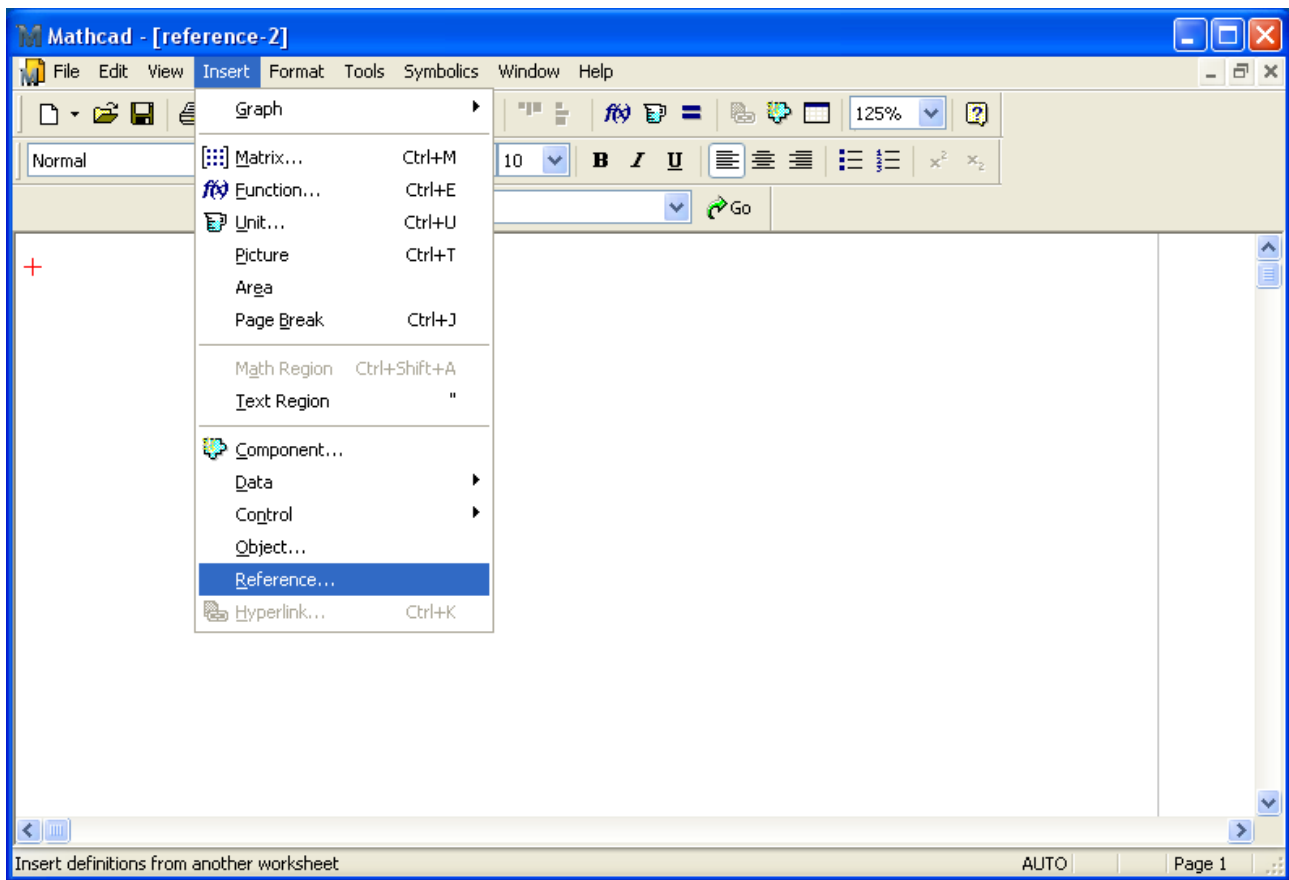
$$2 \cdot f(3) = 34$$

+

$$f(5) - 2 \cdot g(7) = 45.058$$

Press F1 for help. AUTO Page 1

REFERENCE



Mathcad - [reference-1]

File Edit View Insert Format Tools Symbolics Window Help

Normal Arial 10 B I U 100%

My Site Go

Wykorzystanie zewnętrznych procedur

[Insert] - [Reference] (Use relative path for reference)

Reference:D:\Documents and Settings\Leszek\Moje dokumenty\wyklady-2005\mathcad\rozne\procedure-1.xmcd(R)

$$\rho_s := 2540$$
$$A(3,6) = 10.179$$
$$V(4,5) = 62.832$$
$$m(1,2,\rho_s) = 3.99 \times 10^3$$

+

Press F1 for help. AUTO Page 1

The screenshot shows the Mathcad software window titled "Mathcad - [procedure-1]". The interface includes a menu bar (File, Edit, View, Insert, Format, Tools, Symbolics, Window, Help), a toolbar with various icons, and a formatting toolbar with options for font (Normal, Arial), size (10), and style (Bold, Italic, Underline). A search bar contains "My Site" and a "Go" button. The main workspace displays the following text:

Zewnętrzna procedura

Funkcje:

$$A(D) := \frac{\pi \cdot D^2}{4}$$
$$V(D, H) := A(D) \cdot H$$
$$m(D, H, \rho) := V(D, H) \cdot \rho$$

At the bottom of the window, there is a status bar with the text "Press F1 for help.", "AUTO", and "Page 1".

Po dokonaniu zmian w zewnętrznej procedurze należy zapisać arkusz zawierający tę procedurę. Następnie należy uaktywnić (klikając lewym klawiszem myszy) wiersz „Reference ...” w arkuszu wykorzystującym daną procedurę

Mathcad - [reference-1]

File Edit View Insert Format Tools Symbolics Window Help

Normal Arial 10 B I U

My Site Go

Wykorzystanie zewnętrznych procedur

[Insert] - [Reference] (Use relative path for reference)

Reference: D:\Documents and Settings\Leszek\Moje dokumenty\wyklady-2005\mathcad\rozne\procedure-1.xmcd(R)

The referenced document has changed since it was included.

$$\rho_s := 2540$$
$$A(3.6) = 10.179$$
$$V(4,5) = 62.832$$
$$m(1,2,\rho_s) = 3.99 \times 10^3$$

AUTO Page 1

i przeliczyć ten arkusz.

The screenshot shows the Mathcad software interface. The title bar reads "Mathcad - [reference-1]". The menu bar includes "File", "Edit", "View", "Insert", "Format", "Tools", "Symbolics", "Window", and "Help". The "Tools" menu is open, showing options: "Spelling...", "Animation", "Protect Worksheet...", "Calculate", "Optimize", "Debug", "Disable Evaluation", "Trace Error", "License", "Worksheet Options...", and "Preferences...". The "Calculate" option is selected, and its sub-menu is open, showing "Calculate Now" (F9), "Calculate Worksheet" (Ctrl+F9), and "Automatic Calculation" (checked). The main workspace contains the text "Wykorzystanie zewnętrznych bibliotek" and "[Insert] - [Reference]". Below this, a file path is shown: "Reference:D:\Documents and Settings\...". The main content area displays the following mathematical expressions:
$$\rho_s := 2540$$
$$A(3.6) = 10.179$$
$$V(4,5) = 62.832$$
$$m(1,2,\rho_s) = 3.99 \times 10^3$$
The status bar at the bottom indicates "Update all results in the worksheet", "AUTO", and "Page 1".